



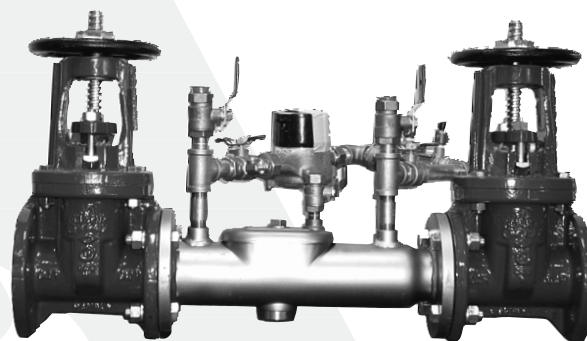
Series 3000SE

Double Check Detector Assembly

Sizes: 2¹/₂" (65mm)

Features

- Very compact
- Corrosion-resistant
- No special tools required for servicing
- 100% lead free through the waterway
- ASSE 1048 horizontal and vertical installation (flow up and down)
- 350psi hydrostatic test pressure



3000SE

Pressure – Temperature

Maximum Working Pressure: 175psi (12 bars)

Temperature Range: 33°F – 110°F (5°C – 43°C)

Materials

Body: 300 Series stainless steel

Spring & Swing Poppet: stainless steel

Disc: rubber

Flange dimension in accordance with AWWA class D

Available Models

Suffix:

LG – less shutoff valves

OSY – UL/FM outside stem and yoke resilient seated gate valves

CFM – cubic feet per minute meter

GPM – gallons per minute meter

LM – less meter

Series 3000SE Double Check Detector Assembly is ideal for space restricted retrofit installations. The 3000SE's long life 300 Series stainless steel housing, along with the cartridge check assembly, substantially reduces the need to service or repair the assembly. This model is 100% lead free through the waterway. The 3000SE provides positive drip-tight closure against the reverse flow of non-potable liquids caused by a cross-connection. The 3000SE can be used in irrigation systems, fire protection systems and other systems requiring non-health hazard protection.

Specifications

A Double Check Detector Assembly shall be installed where indicated on the plans. The assembly shall consist of two independently operating cartridge checks, appropriate test cocks and inlet and outlet resilient seated shutoff valves. Each cartridge check shall be internally loaded and provide a positive drip closure against the reverse flow of liquid caused by back-siphonage or backpressure. The cartridge checks include a stainless steel spring and swing poppet, a rubber faced disc and a replaceable seat. The body shall be manufactured from 300 Series stainless steel and shall be 100% lead free through the waterway with a single one-bolt access cover. No special tools shall be required for servicing. The assembly shall be an Ames Company Series 3000SE.

Job Name _____ Contractor _____

Job Location _____ Approval _____

Engineer _____ Contractor's P.O. No. _____

Approval _____ Representative _____

Standards

ASSE, CSA, FM, UL, USC

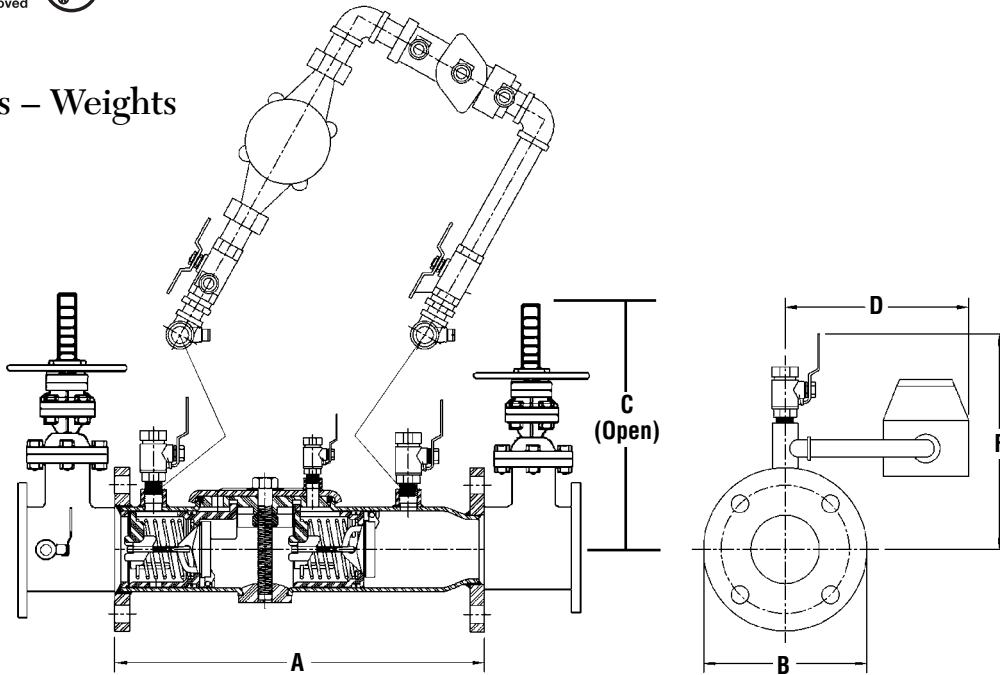
Flange dimensions in accordance with AWWA

Approvals

ASSE, CSA, FM, UL, USC



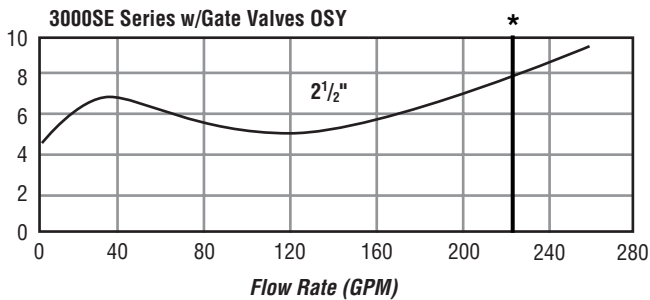
Dimensions – Weights



Size		A		B		C OSY		D		F		Lay Length with Gates		Wt. of Valves without Gates		Wt. of Valves with Gates	
in.	mm	in.	mm	in.	mm	in.	mm	in.	mm	in.	mm	in.	mm	lb.	kg	lb.	kg
2½	65	15¾	400	7	178	16¾	416	15	381	10½	267	31	787	37	16.8	124	56.2

Capacities

*UL Rated



IMPORTANT: Inquire with governing authorities for local installation requirements.



A Division of Watts Industries



www.amesfirewater.com

875 National Drive • Suite #107 • Sacramento, CA 95834 • Phone: 916-928-0123 • Fax: 916-928-9333